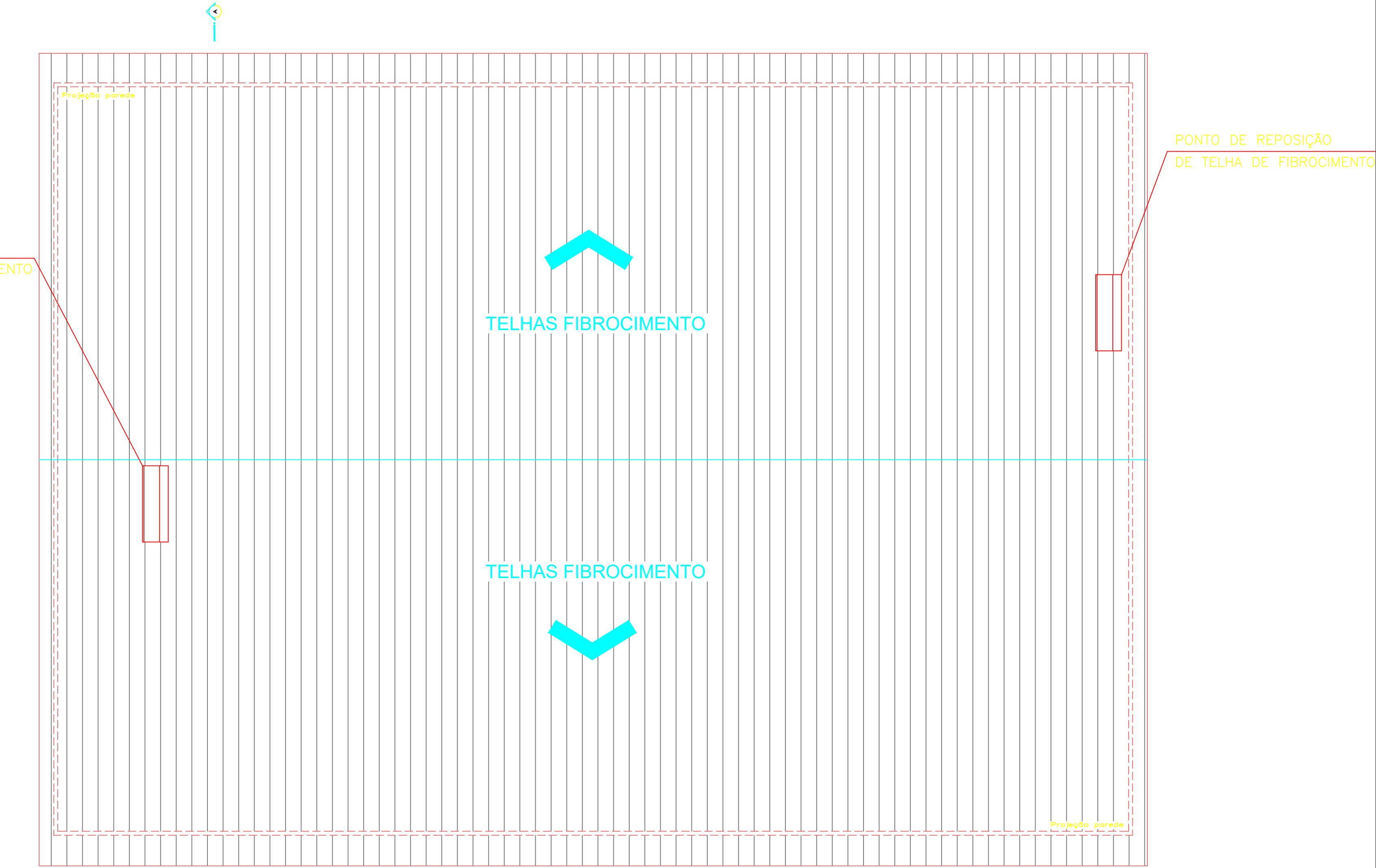
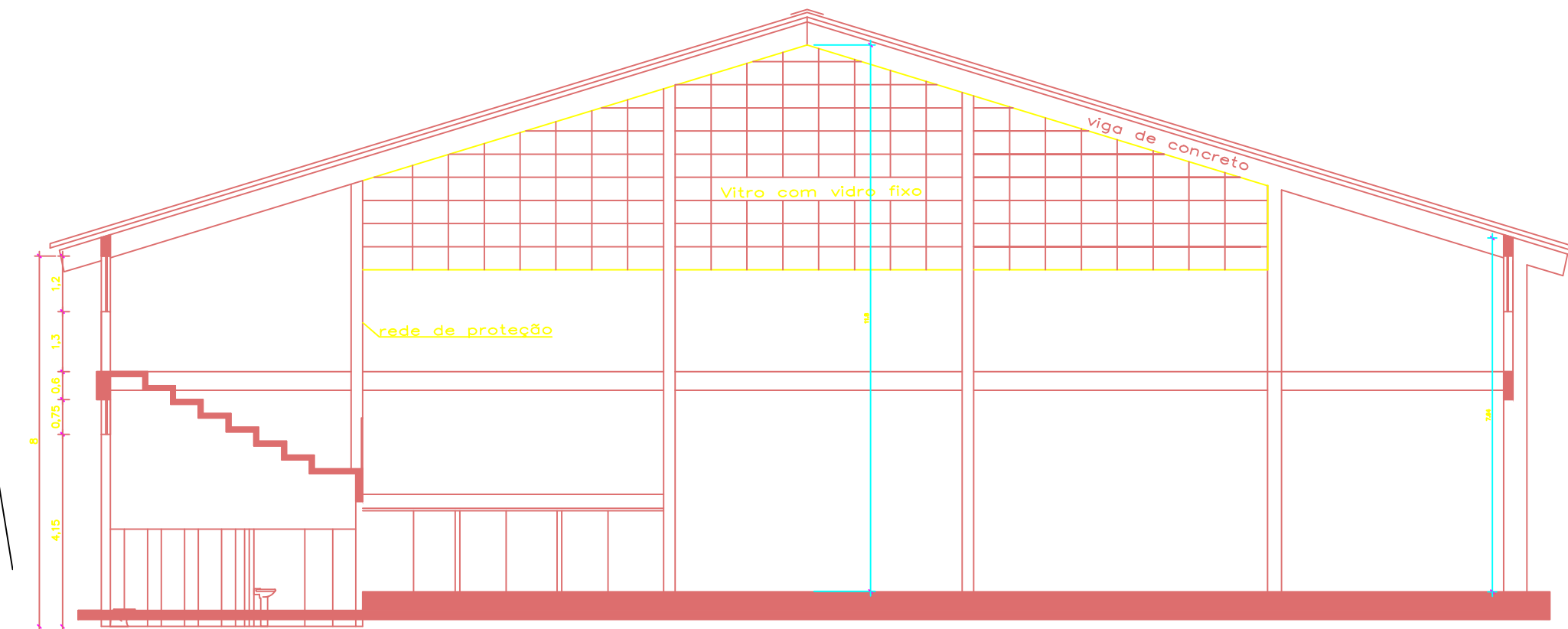



PLANTA DE LOCALIZAÇÃO
esc: 1:500



PLANTA DE COBERTURA
esc: 1:125



CORTE AA
esc: 1:125

PREFEITO MUNICIPAL: RODRIGO DECIMO SECRETÁRIO: GUILHERME SCHNEIDER RUA ANDRÉ MARQUES 820 • 10º ANDAR • CENTRO CEP 97010-040 • SANTA MARIA • RS (55) 3921 7068 • sep.santamaria@gmail.com		<div> PREFEITURA MUNICIPAL DE SANTA MARIA</div>	